

# Plan 2132

Ptarmigan Ridge . Bonney Lake, Washington



Total Living Size: 2,132 sf. Base Price: TBD

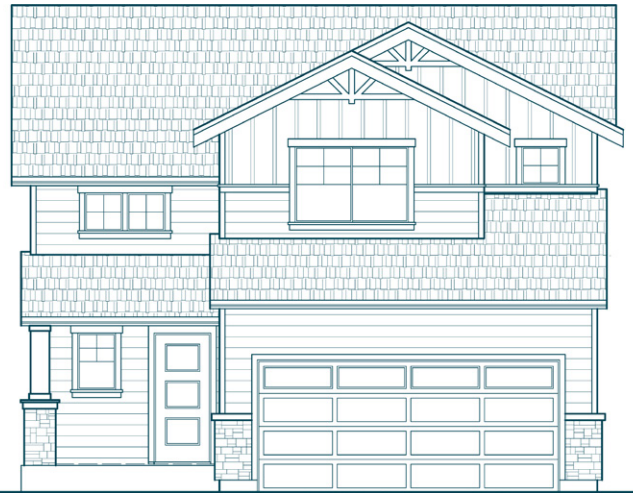
**Bedrooms:** 3

**Bathrooms:** 2.5

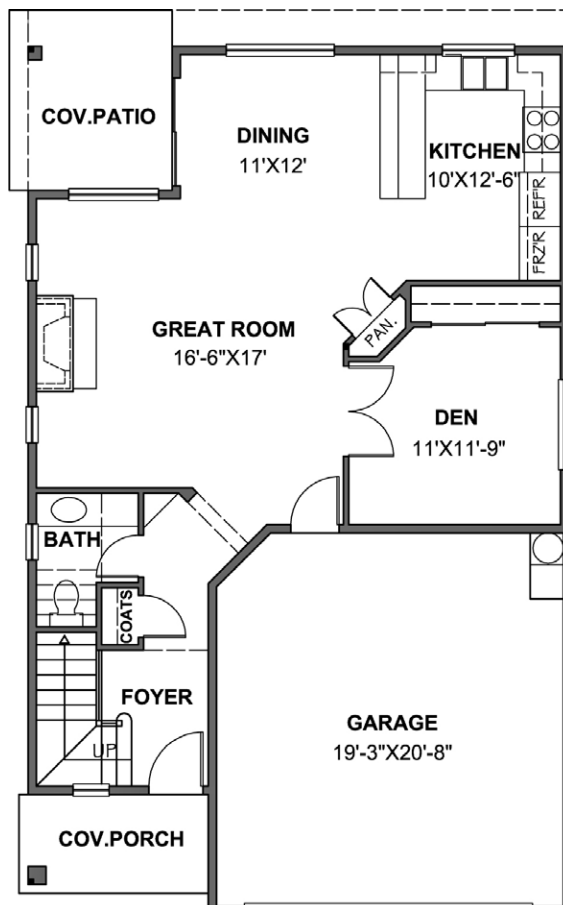
**Additional Highlights:** Den off of great room, cozy covered back patio. Master suite and open loft on upper.

**Garage:** 2-Car

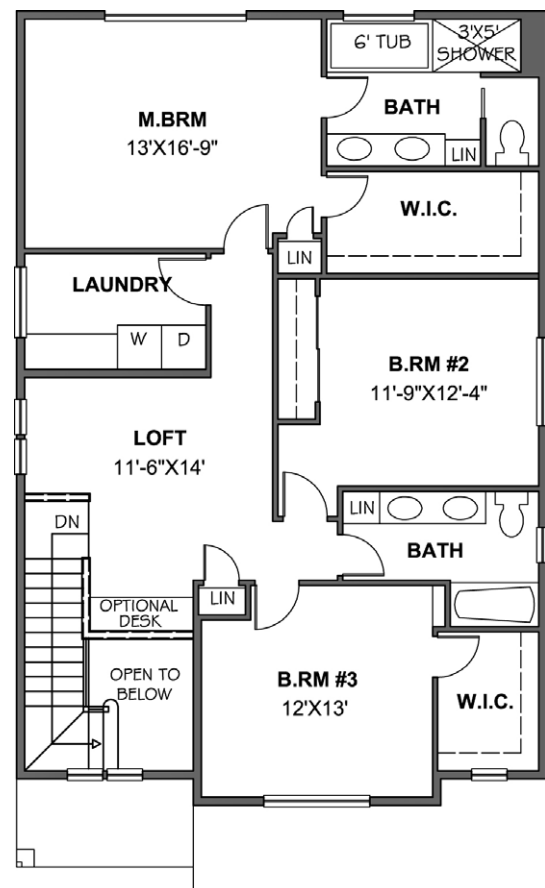
The 2132 Plan offers cozy living spaces while maximizing every available inch of the floorplan. The main level features a comfortable den just off the open concept living and dining space. The upper level offers a large master suite complete with generous walk-in closet and 5 piece bath. Also included upstairs are 2 additional bedrooms, a full bath, laundry facilities and study loft.



## MAIN LEVEL



## UPPER LEVEL



### FOR SALES INFORMATION:

Michael James Dattilo / Designated Broker / Cell. (253) 592-0953 / michael@michaeljamesre.com

HCH1Inc.com

/HighCountryHomesInc



Note: Continuing a policy of constant improvement, builder reserves the right to change features, brand names, dimensions, architectural details and designs. This brochure is for illustrative purposes and drawings are not to scale. This is not part of a legal contract. Prices are subject to change without notice.

