

# Plan 2712

Ptarmigan Ridge . Bonney Lake, Washington



Total Living Size: 2,712 sf. Base Price: TBD

**Bedrooms:** 3

**Bathrooms:** 3

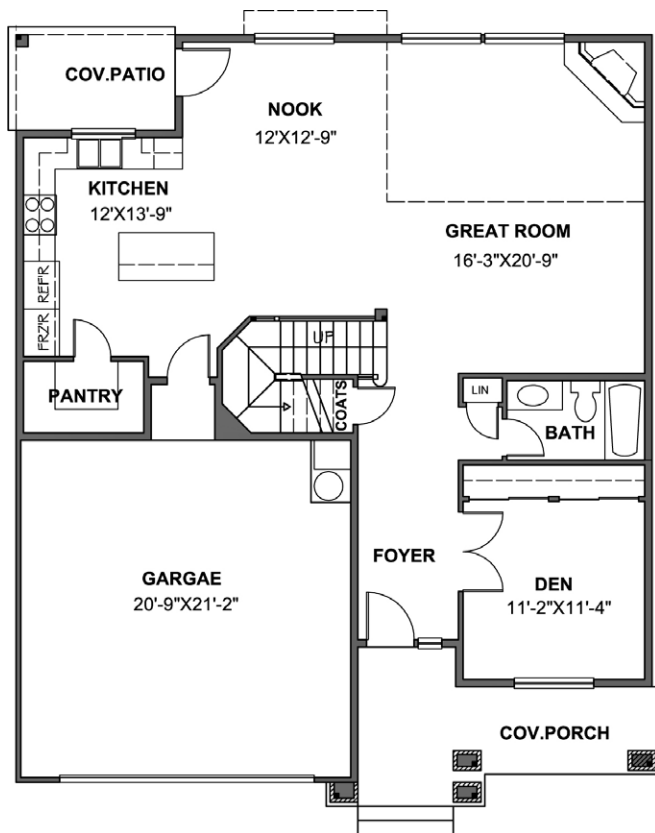
**Additional Highlights:** Den off of entry, cozy covered back patio, master suite and open loft on upper level.

**Garage:** 2-Car

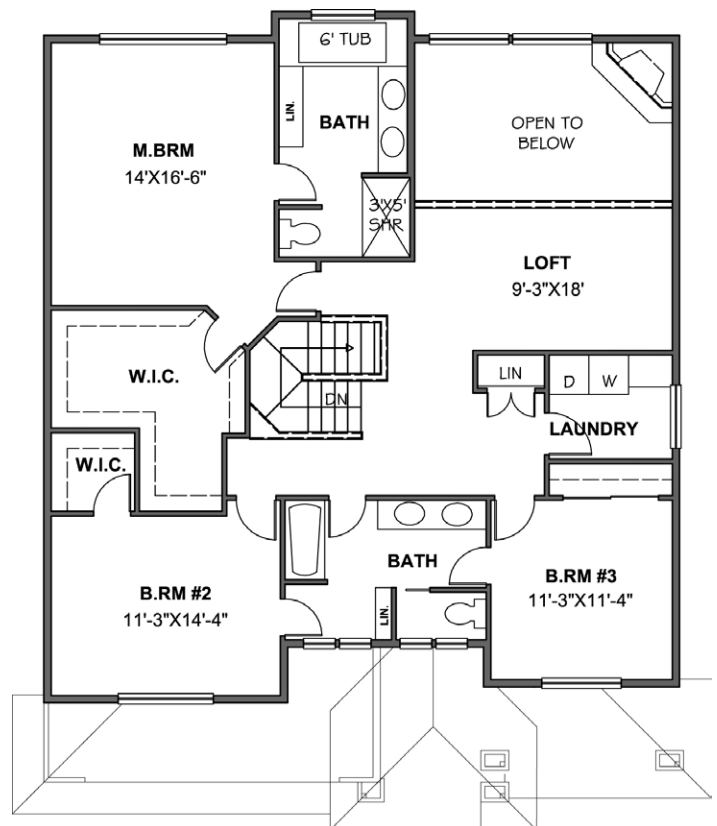
Our 2712 plan is nicely appointed with open living spaces throughout. You are greeted to a private den just off the covered porch entry with the foyer opening up to a large open concept great room and kitchen complete with walk-in pantry. The upper level offers a full master suite with large walk-in closet and 5 piece master bath. Additionally, the upstairs features 2 additional bedrooms, Jack and Jill bath, laundry facilities and open study loft.



## MAIN LEVEL



## UPPER LEVEL



### FOR SALES INFORMATION:

Michael James Dattilo / Designated Broker / Cell. (253) 592-0953 / michael@michaeljamesre.com

HCH1Inc.com

/HighCountryHomesInc



Note: Continuing a policy of constant improvement, builder reserves the right to change features, brand names, dimensions, architectural details and designs. This brochure is for illustrative purposes and drawings are not to scale. This is not part of a legal contract. Prices are subject to change without notice.

