

# Plan 2031

## EXPRESSION SERIES



Total Living Size: 2,031 sf.

**Bedrooms:** 3 or 2 with Study

**Bathrooms:** 2

**Additional Highlights:** Rambler plan, covered back porch

**Garage:** 3-Car

The 2031 plan is a beautiful, traditional style rambler home. This one level home offers 3 comfortably sized bedrooms including a master suite with walk-in closet. The open living space features a large vaulted ceiling family room adjacent to the kitchen and dining spaces. The back patio features a covered back patio.

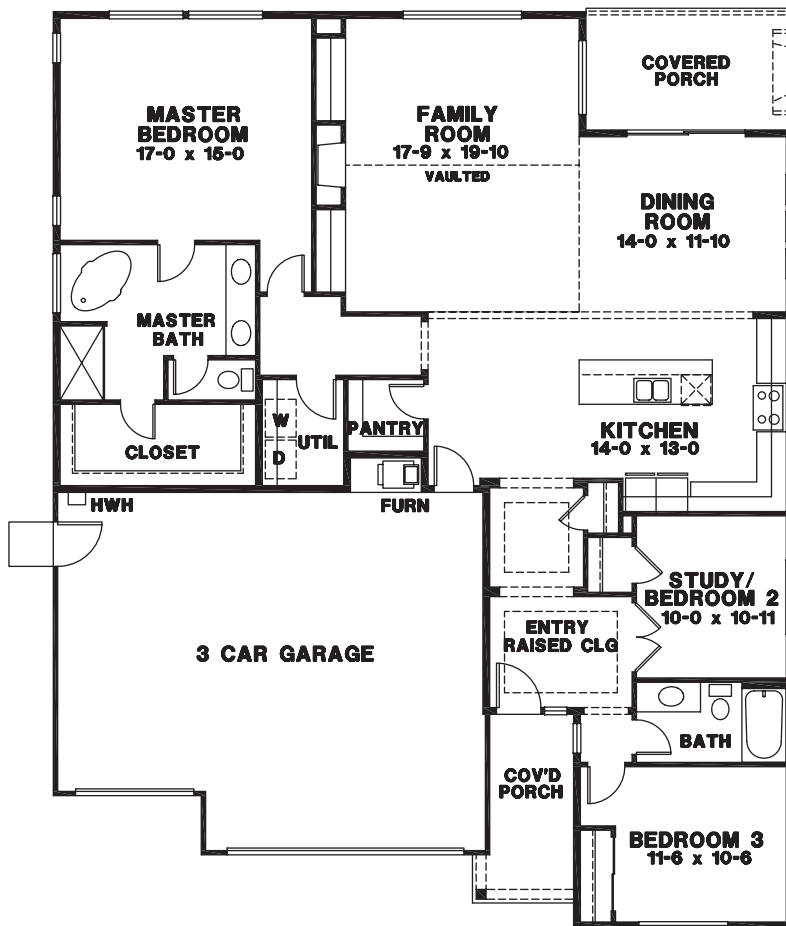


Elevation A



Elevation B

### MAIN LEVEL



FOR SALES INFORMATION:  
 Doug Walker / John L. Scott, Inc. / Cell. (253) 370-1690 / [doug@newhomesforyou.com](mailto:doug@newhomesforyou.com)

[HCH1Inc.com](http://HCH1Inc.com)  
 /HighCountryHomesInc



Note: Continuing a policy of constant improvement, builder reserves the right to change features, brand names, dimensions, architectural details and designs. This brochure is for illustrative purposes and drawings are not to scale. This is not part of a legal contract. Prices are subject to change without notice.

