

# Plan 3336

## EXPRESSION SERIES



Total Living Size: 3,336 sf.

For illustration purposes only, some details may not be as shown.

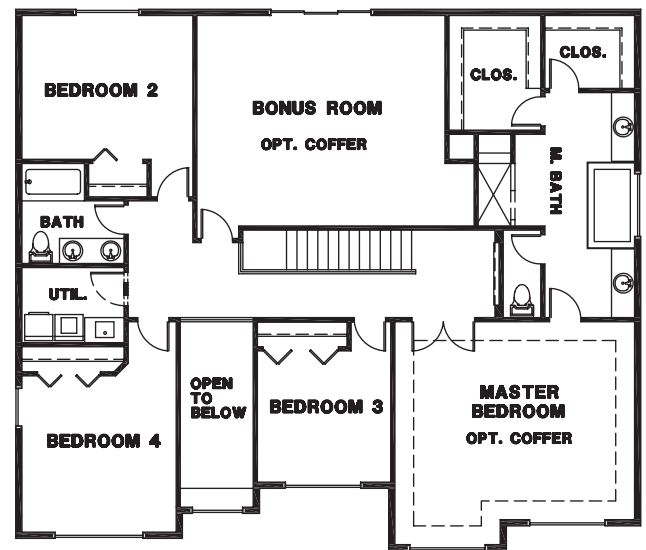
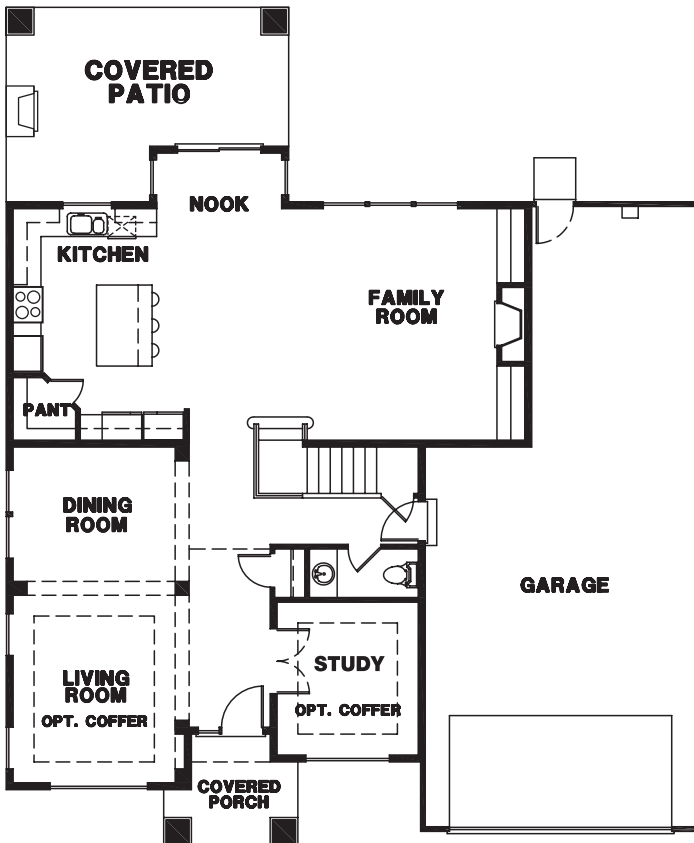
- Bedrooms:** 4
- Bathrooms:** 2.5
- Additional Highlights:** Den and upper level bonus room
- Garage:** 3-Car Tandem

This traditional Northwest inspired plan welcomes it's guests to a formal living/dining space and a comfortable sized den that can be closed off with double French doors. The open family room and kitchen is spacious and open out to a covered patio out back. The upper floor has 4 bedrooms and a large bonus room. The master suite offers his/hers walk-in closets and a spacious 5-piece master bathroom.



MAIN LEVEL

UPPER LEVEL



FOR SALES INFORMATION:  
 Doug Walker / John L. Scott, Inc. / Cell. (253) 370-1690 / [doug@newhomesforyou.com](mailto:doug@newhomesforyou.com)

[HCH1Inc.com](http://HCH1Inc.com)  
 /HighCountryHomesInc



Note: Continuing a policy for constant improvement, builder reserves the right to change features, brand names, dimensions, architectural details and designs. This brochure is for illustrative purposes and drawings are not to scale. This is not part of a legal contract. Prices are subject to change without notice.

