

Plan 2716

EXPRESSION SERIES



Total Living Size: 2,716 sf. Base Price: TBD

For illustration purposes only, some details may not be as shown.

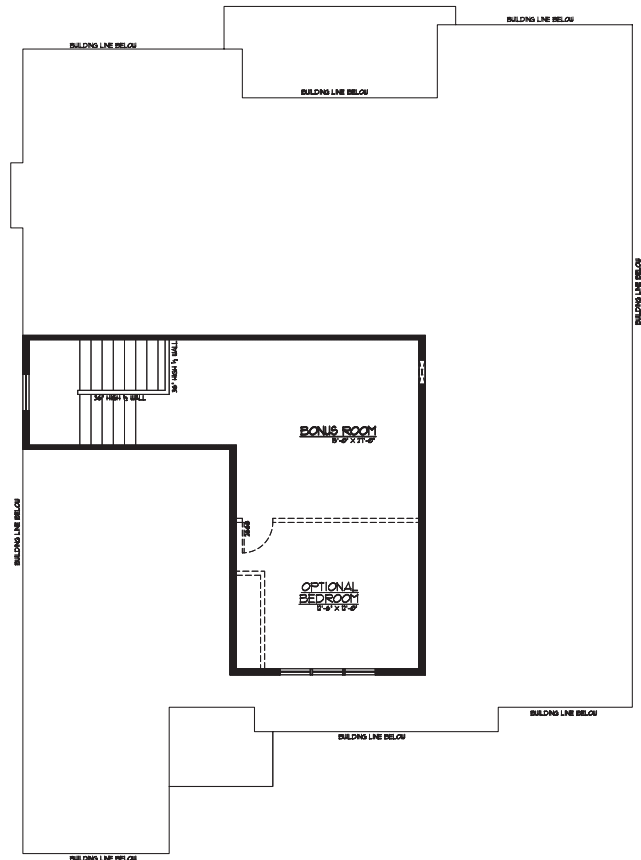
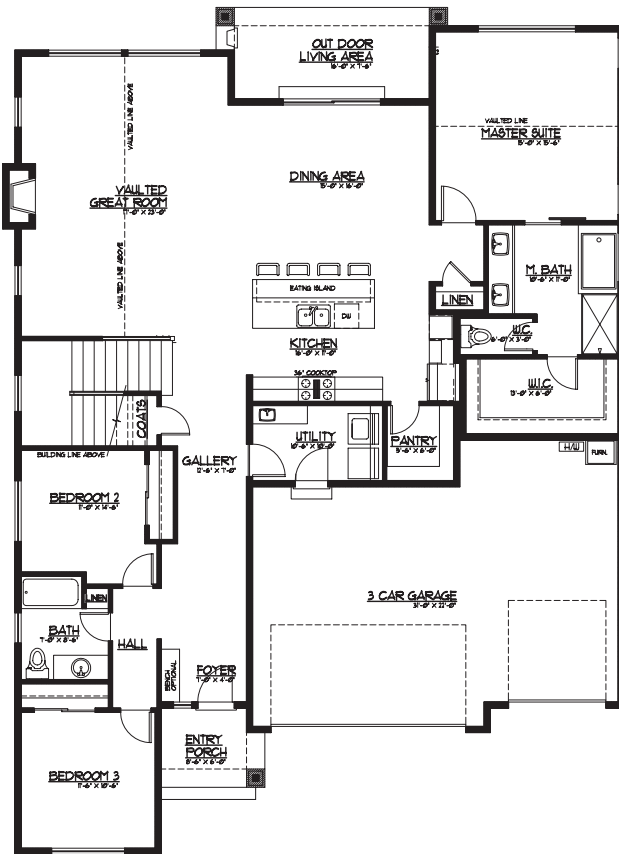
- Bedrooms:** 3 with optional 4
- Bathrooms:** 2
- Additional Highlights:** Vaulted great room, open concept
- Garage:** 3-Car

This comfortable home lives as a single story rambler with the master suite conveniently located off the main living space but offers an added bonus area on the upper level that can be optioned to include a 4th bedroom. The second and third bedrooms share a cozy full bath located just off the entry. The main living area feels very spacious with a vaulted ceiling in the great room.



MAIN LEVEL

UPPER LEVEL



FOR SALES INFORMATION:

Doug Walker / John L. Scott, Inc. / Cell. (253) 370-1690 / doug@newhomesforyou.com
Justin Mugford / John L. Scott, Inc. / Cell. (253) 355-0374 / jmugford@johnlscott.com

HCH1Inc.com

/HighCountryHomesInc



Note: Continuing a policy of constant improvement, builder reserves the right to change features, brand names, dimensions, architectural details and designs. This brochure is for illustrative purposes and drawings are not to scale. This is not part of a legal contract. Prices are subject to change without notice.

